

Wire mesh cartridge **WM series**

The WM series filter elements are designed for critical filtrations, when absolute or extremely fine filtration rating is required.

Made entirely of stainless steel to withstand intensive regeneration cycles, chemical or mechanical regeneration cycles.

The filter septum is manufactured with high quality wire mesh in order to guarantee superior accuracy of solids separation.

Our closely controlled welding and manufacturing procedures enable the use of WM elements at particularly high temperature.

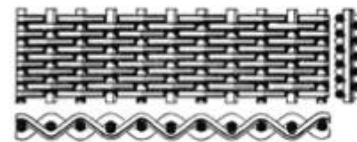
Resin bonded configurations provide a cost effective alternative for non critical applications.

CHARACTERISTICS

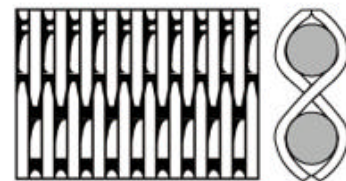
- Excellent mechanical strength
- Available in pleated and wrap-around arrangement
- No material migration
- Support drain mesh construction to prevent pleat collapse
- Three end cap configurations available
- Different wire mesh selection: Plain Dutch Weave, square mesh, Reverse Dutch Weave, Dutch Twilled Weave



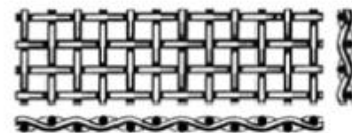
Reps - Plain Dutch Weave



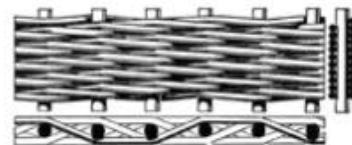
PZ - Reverse Dutch Weave



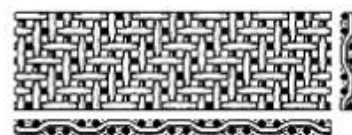
Square mesh



Touraille - Dutch Twilled Weave



Twilled Woven Cloth



RECOMMENDED FLOW RATE [LT/H] 10" ELEMENT - DP 0,1 bar

RATING [mm]	PLEATED			WRAP AROUND		
	1 cP	25 cP	70 cP	1 cP	25 cP	70 cP
10	1800	600	400	1600	500	300
25	2500	1500	1250	2000	1100	850
40	2500	1600	1400	2500	1400	1200
75	2500	1800	1600	2500	1800	1600
100	3000	1800	1600	2500	1800	1600
150	3000	1800	1600	3000	2100	1900
250	3500	2000	1800	3000	2100	1900
350	3500	2000	1800	3000	2100	1900
500	3500	2000	1800	3000	2100	1900
750	3500	2000	1800	3000	2100	1900

MAIN APPLICATIONS

High temperature fluids.
 High differential pressure.
 High viscosity fluids.
 Corrosive liquids and gases.
 Toxic or hazardous fluids.
 Cryogenic fluids.
 Process steam.
 Hydraulic Oil.
 Natural or process gas.
 Paint & varnishes

Wire mesh cartridge **WM series**

PRODUCT SPECIFICATION

Retention ratings

10, 25, 40, 75, 100, 150, 250, 350, 500, 750 µm

Max differential pressure

“Epoxy glued” arrangement	6 bar @ 25 °C
“Crimped” arrangement	6 bar @ 25 °C
“Standard welded” arrangement	6 bar @ 25 °C
“Heavy welded” arrangement	15 bar @ 25 °C

Max operating temperature

Epoxy resin glue arrangement	120 °C
Crimped arrangement	220 °C
Welded arrangement	360 °C

Construction materials

Wire mesh	304 SS 316 SS Other materials upon request
Hardware	304 SS 316 SS Other materials upon request
End & side seam	Epoxy resin glued Crimping Pulsed microTIG welding
Gaskets	Buna-n, EPDM, Silicone, Viton, PTFE, FEP Encapsulated, KlingerSil®

Dimensions

Length	10” 20” 30” 40” [nominal]
Outer diameter	2,7”

Filtration area

10” module	0,20 m ²
20” module	0,40 m ²
30” module	0,60 m ²
40” module	0,80 m ²

ORDERING INFORMATION

WM	G	P	050	-	30	S	0	V	0001
	ARRANGEMENT	TYPE	MICRON RATING [1]		SIZE	MATERIAL	END CAPS	GASKETS	COD.
	E Epoxy glued	C Wrap-around	010 10 µm		1 10”	W 304 SS	0 DOE	N Buna-n	
	G Crimped	P Pleated	025 25 µm		2 20”	S 316 SS	3 SOE - OR 222/FLAT END	E EPDM	
	L Standard		040 40 µm		3 30”		6 SOE - OR 226/FLAT END	R Natural rubber	
	H Heavy welded		075 75 µm		4 40”		7 SOE - OR 226/FIN END	S Silicone	
			100 100 µm				8 SOE - OR 222/FIN END	V Viton	
			150 150 µm				9 SOE - OR 225/FIN END	T PTFE [2]	
			250 250 µm				T THREADED	F FEP	
			350 350 µm					K KlingerSil® [2]	
			500 500 µm						
			750 750 µm						

1] Other filtration rating upon request

2] Available only with DOE configuration.



ASCO Filtri S.r.l.

20089 ROZZANO (MI) – ITALY
Via Silvio Pellico, 6/8
Phone (+39) 02 89257.1
Fax (+39) 02 89257.201
e-mail asco@ascofiltri.com
Web site www.ascofiltri.com